

## OUR PROJECTS

### Environmental Impact Assessments (EIA, ESIA, EHIA, SEA) Environmental Management Plans (EMP)



**Project:** SMW6 Gulf Extension Submarine Cable System  
– EIA & EMP (2025 - ongoing)

**Location:** Bahrain

**Client:** Envirotech Consultancy W.L.L

**Scope:**

- Marine ecological survey (remote video).
- Sampling (seawater, sediment).
- Hydrodynamic modelling (flow and sediment dispersion).
- Consultation.
- Environmental Impact Assessment (EIA).
- Environmental Management Plan (EMP).



**Project:** MERCO Waste to Energy Plant - EIA (2025)

**Location:** Bahrain

**Client:** Middle East Recycling Company

**Scope:**

- Air quality and air dispersion modeling.
- Process evaluation and waste management review.
- Environmental Impact Assessment (EIA).



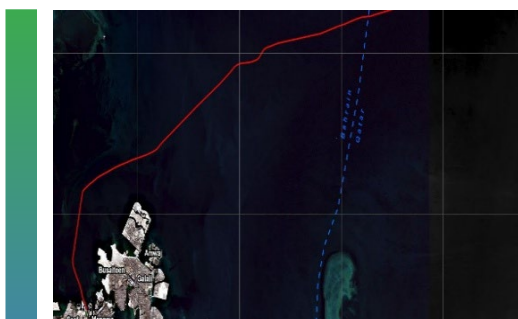
**Project:** Precious Metal Refinery - EIA (2025)

**Location:** Bahrain

**Client:** Arab Architects

**Scope:**

- Air quality baseline study.
- Noise baseline study.
- Environmental Impact Assessment (EIA).
- Construction and Operational Environmental Management Plans (CEMP & OEMP).



**Project:** STC Bahrain Submarine Cable - CEMP (2024)

**Location:** Bahrain

**Client:** STC Bahrain

**Scope:**

- Stakeholder consultations and baseline data.
- Specialized hydrodynamic assessments.
- Construction Environmental Management Plan (CEMP), including proposed mitigation measures and protocols for monitoring and auditing.



**Project:** De Bottleneck GDN Phase 1 - Northern and Southern Sections - CEMP & Implementation Monitoring (2022 - 2024)

**Location:** Bahrain

**Client:** Petrofac

**Scope:**

- Marine ecological survey (remote video).
- Sampling (seawater, sediment).
- Consultation.
- Impact assessment (consultation, mitigation/monitoring plan).
- Monitoring and auditing during construction work.



**Project:** Bahrain Bay Utilities District Cooling Subsea Pipelines Construction - CEMP & Implementation Monitoring (2023)

**Location:** Bahrain

**Client:** Bilfinger Tebodin Middle East Ltd.

**Scope:**

- Marine ecological survey (remote video).
- Sampling (seawater, sediment).
- Consultation.
- Impact assessment (consultation, mitigation/monitoring plan).
- Monitoring and auditing during construction work.



**Project:** Slurry Fracture Injection - EIA (2022)

**Location:** Bahrain

**Client:** Tatweer Petroleum

**Scope:**

- Baseline studies.
- Environmental Impact Assessment (EIA).
- Operational Environmental Management Plan (OEMP).



**Project:** East Hidd Housing (EHH) Access Road & Junction Project - EIA & EMP (2022)

**Location:** Bahrain

**Client:** KEO International Consultants

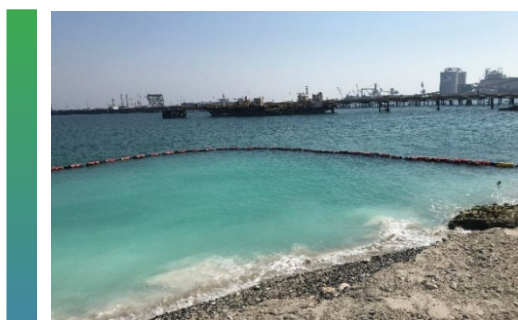
**Scope:**

- Marine ecological survey (remote video).
- Sampling (seawater, sediment).
- Hydrodynamic modelling (flow, flushing and sediment dispersion).
- Heritage Impact Assessment (HIA) and Consultation.
- Environmental Management Plan (EMP).



**Project:** GARMCO Foil Mill - EIA (2021)  
**Location:** Bahrain  
**Client:** Gulf Aluminium Rolling Mill (GARMCO)  
**Scope:**

- Air quality and waste management plans.
- Environmental Impact Assessment (EIA).
- Environmental Management and Monitoring Plan (EMP).



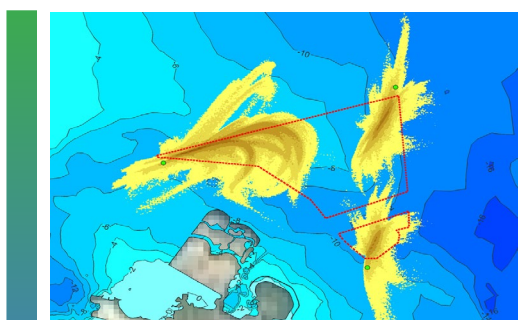
**Project:** BAPCO Modernization Program (BMP) Sea Lines and Cables Installation Works & Implementation Monitoring - CEMP (2020 - 2024)  
**Location:** Bahrain  
**Client:** Al Hassanain Co. B.S.C. (c)  
**Scope:**

- Marine ecological survey (remote video).
- Sampling (seawater, sediment).
- Impact assessment (consultation, mitigation/monitoring plan).
- Monitoring and auditing during construction work.



**Project:** Bahrain Steel Storage Yard Expansion, Reclamation and Borrow Area - EIA & EMP (2020)  
**Location:** Bahrain  
**Client:** Bahrain Steel  
**Scope:**

- Marine ecological survey (remote video).
- Sampling (seawater, sediment).
- Hydrodynamic modelling (flow and sediment dispersion) and Consultation.
- Environmental Impact Assessment (EIA).
- Environmental Management Plans (EMP).



**Project:** North Muharraq Borrow Area (NMBA) - EIA & CEMP (2020)  
**Location:** Bahrain  
**Client:** Boskalis Westminster Contracting Ltd.  
**Scope:**

- Marine ecological survey (remote video, SCUBA).
- Sampling (seawater, sediment, infauna).
- Hydrodynamic modelling (flow and sediment dispersion).
- Consultation.
- Environmental Impact Assessment (EIA).



- Construction Environmental Management Plan (CEMP).



**Project:** Al Namal Marine Sand Discharge Facility - CEMP (2020)

**Location:** Bahrain

**Client:** Al Namal & VKL Group of Companies

**Scope:**

- Air and water quality assessments.
- Waste management plan.
- Construction Environmental Management Plan (CEMP), including mitigation measures and a site auditing protocol.



**Project:** Offshore Oil Exploration Block I, II, III & IV- EIA & EMP (2004 - 2020)

**Location:** Bahrain

**Clients:** PETRONAS, Occidental of Bahrain (Offshore) LLC, Schlumberger, Eni Bahrain B.V., PTTEP Bahrain Co.

**Scope:**

- Marine ecological survey (remote video, SCUBA).
- Sampling (seawater, sediment, infauna).
- Consultation.
- Environmental Impact Assessment (EIA).
- Environmental Management Plans (EMP).
- Post drilling monitoring (ecology and water quality).



**Project:** Tubli Waste Water Treatment Plant - EIA (2019)

**Location:** Bahrain

**Client:** WTE Wassertechnik GmbH

**Scope:**

- Air quality.
- Chemical use and waste.
- Environmental Impact Assessment (EIA).



**Project:** Al Dur II Independent Water and Power Project (IWPP) - EIA (2019)

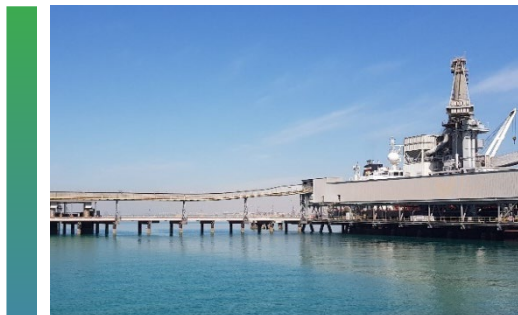
**Location:** Bahrain

**Client:** Haya Power and Desalination Company

**Scope:**

- Air quality and hydrodynamics.
- Ecology, soil and groundwater.
- Water and sediment quality assessment.
- Waste generation and management.
- Socio economics.

- Environmental Impact Assessment (EIA).



**Project:** Alba Port Capacity Upgrade Project – ESIA, CEMP & OESMP (2018)

**Location:** Bahrain

**Client:** Aluminium Bahrain

**Scope:**

- Baseline air and noise surveys.
- Community and occupational health, safety and security.
- Waste management.
- Marine ecological survey (remote video).
- Sampling (seawater, sediment).
- Stakeholder Engagement Plan (SEP).
- Environmental Impact Assessment (EIA).
- Construction and Operational Environmental Social Management Plans (CESMP & OESMP).



**Project:** Constructed wetland for Produced Water Treatment – EHSIA, CEMP & OEMP (2018)

**Location:** Bahrain

**Client:** Tatweer Petroleum (NOGA)

**Scope:**

- Baseline environmental studies.
- Environmental, Health, and Social Impact Assessment (EHSIA), including suitable mitigation measures.
- Construction and Operational Management Plans (CEMP & OEMP).



**Project:** Bahrain Urban Transit Network – EIA (2018)

**Location:** Bahrain

**Client:** Dheya Tawfiq Engineering (DTEB)/Ministry of Transportation and Telecommunications

**Scope:**

- Stakeholder consultations.
- Baseline surveys – air quality, soil and groundwater, noise, water and sediment quality and waste management.
- Marine and terrestrial ecology.
- Environmental Impact Assessment (EIA).



**Project:** Banagas CGP III Supplementary - ESIA, CESMP & OESMP (2017)

**Location:** Bahrain

**Client:** Bahrain National Gas Company (Banagas)

**Scope:**

- Air quality monitoring and modelling.
- Noise monitoring and waste management.
- Stakeholder consultations and ecological assessments
- Environmental and Social Impact Assessment (ESIA).
- Construction and Operational Environmental and Social Management Plans (CESMP & OESMP).



**Project:** ALBA Potline 6 and Power Plant 5 Expansion Supplementary - ESIA (2017)

**Location:** Bahrain

**Client:** Aluminium Bahrain (Alba)

**Scope:**

- Asbestos survey.
- Stakeholder Engagement and Public Disclosure.
- Air quality and waste management.
- Geology and hydrogeology.
- Occupational and community health, safety and security.
- Supplementary Environmental and Social Impact Assessment (ESIA).



**Project:** Bapco Modernisation Program (BMP) - ESIA (2016)

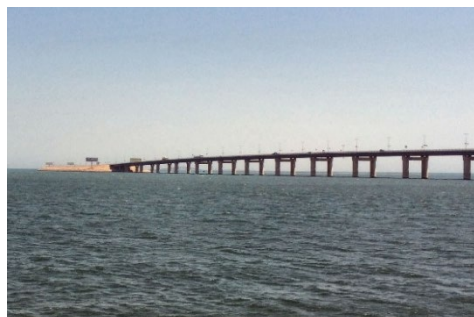
**Location:** Bahrain

**Client:** Technip/Bahrain Petroleum (Bapco)

**Scope:**

- Stakeholder engagement, cultural heritage and archaeology.
- Air quality, noise and soil and groundwater assessments.
- Hydrodynamics and water and sediment assessments.
- Marine and terrestrial ecology.
- Occupational health and safety and waste management.
- Environmental and Social Impact Assessment (ESIA).





**Project:** Feasibility – Engineering Study to Link KSA and Kingdom of Bahrain with the GCC Railway - EIA & EMP (2015)

**Location:** Bahrain

**Client:** SNC Lavalin/King Fahd Causeway Authority

**Scope:**

- Marine ecological survey (remote video, SCUBA).
- Remote sensing - seafloor classification and mapping.
- Sampling (seawater, sediment, infauna).
- Consultation.
- Environmental Impact Assessment (EIA).
- Environmental Management Plan (EMP).



**Project:** Development of Sewage Treatment Plant and Sewer Conveyance System at Muharraq – EIA, CEMP & OEMP (2010)

**Location:** Bahrain

**Client:** Ministry of Finance (Kingdom of Bahrain)

**Scope:**

- Marine ecological survey (remote video, SCUBA).
- Sampling (seawater, sediment, infauna).
- Stakeholder Engagement Plan (SEP) and Consultation.
- Environmental Impact Assessment (EIA).
- Construction and Operational Environmental Management Plans (CEMP & OEMP).



**Project:** North Manama Causeway Project – EMP (2010)

**Location:** Bahrain

**Client:** Six Construct – Haji Hassan Group

**Scope:**

- Environmental Management Plan (EMP), covering quality control plans and proposed monitoring regime during construction, including details of noise, air, dewatering (i.e. TSS monitoring) and site audits.