

OUR PROJECTS

Remote Sensing and Habitat Mapping



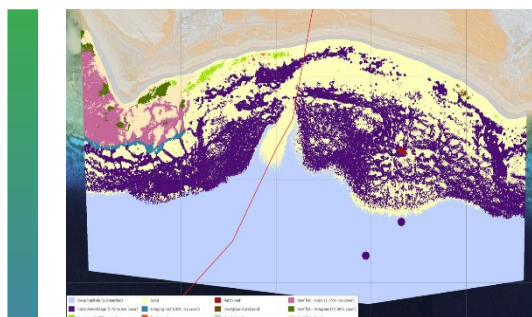
Project: Madaya - Farasan Cable Project Marine Environmental Baseline Survey and Habitat Mapping (2024)

Location: Kingdom of Saudi Arabia (KSA)

Client: KEO International Consultants

Scope:

- Identification of habitats.
- Satellite habitat mapping works in support of the marine environmental baseline and marine construction activities.



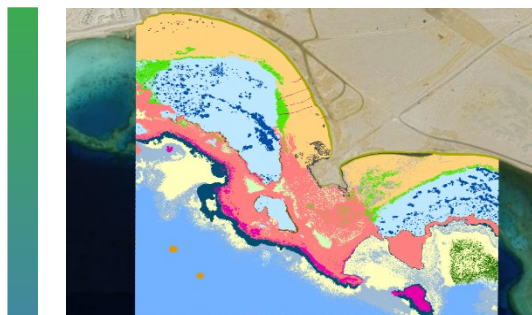
Project: IEX Cable Landing- Haddah Beach Marine Environmental Baseline Survey and Habitat Mapping (2024)

Location: Kingdom of Saudi Arabia (KSA)

Client: GHD

Scope:

- Marine Environmental Baseline Survey.
- Satellite derived seafloor habitat map.



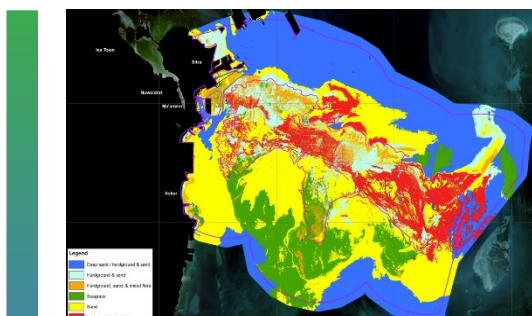
Project: AMAALA Marine Life Operational Facility (MLOF) Marine Environmental Baseline Survey and Habitat Mapping (2024)

Location: Kingdom of Saudi Arabia (KSA)

Client: KAUST - Beacon Development

Scope:

- Identification of habitats.
- Remote Sensing Habitat Mapping.
- Seafloor habitat map, using Remote Sensing and satellite imagery.



Project: Environmental Baseline Studies for 5 new cities (2023)

Location: Bahrain

Client: Urban Planning and Development Authority (UPDA)

Scope:

- Baseline studies.
- Satellite habitat mapping,
- Sensitivity analysis and mapping.
- Exclusion mapping for the 5 Islands.